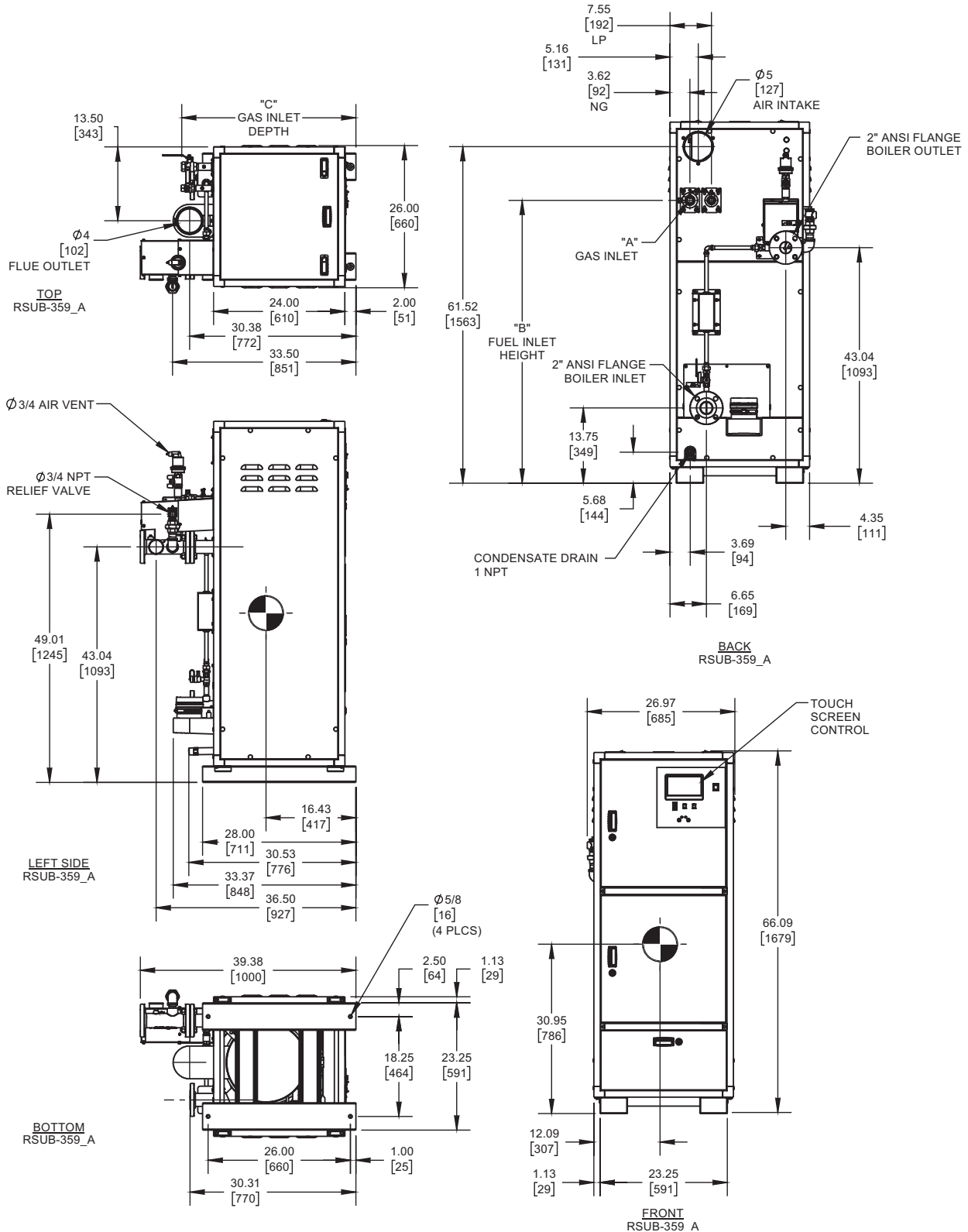


# ENCORE 500 DUAL FUEL

Category II or Category IV Appliance  
(see Installation and Operation Manual for venting information)

## INDOOR UNIT



GAS OPTION	"A"	"B"	"C"
NG	1 NPT	51.70	31.82
LP	3/4 NPT	51.70	31.91

- Notes:**
1. Dimensions are approximate and should not be used to "rough-in" equipment.
  2. Dimensions are subject to change without notice.
  3. All dimensions are in inches [mm].
  4. Symbol indicates center of gravity.

## BOILER CERTIFIED RATINGS & CAPACITIES

<b>Fuel Type</b>	Natural/Propane Gas	<b>Boiler FLA</b>	11.2*
<b>Input BTU/hr.</b>	500,000 / 147 KW	<b>Boiler HP</b>	14.6
<b>Output BTU/hr.</b>	490,000 / 144 KW	<b>Min. Gas Pressure Required</b>	4" W.C.
<b>Electrical Requirements</b>	120 VAC/60 Hz/1PH (with neutral)	<b>Max. Gas Pressure Allowed</b>	14" W.C.
		<b>Operating Weight</b>	633 lbs. / 287.1 kg.

## BOILER TRIM & CONTROLS

<b>Main Gas Valve</b>	Dungs MBC	<b>Air Switch</b>	Huba
<b>Ignition Control</b>	Fenwal	<b>Flow Sensor</b>	SIKA
<b>Operating Control</b>	HeatNet®	<b>Blocked Flue Switch</b>	Cleveland NS2
<b>High Limit</b>	Jumo	<b>Blower Motor</b>	Ametek
<b>Relief Valve</b>	3/4" x 3/4" set @ 50 psi	<b>L.W.C.O.</b>	800

## A.S.M.E.

<b>ASME Sect IV Fire Side Htg Surface</b>	72.91 Sq. Ft. / 6.77 Sq. M.	<b>Design Data</b>	Max. 160 psig & 210°F
		<b>Water Volume</b>	12.4 gal. / 46.9 Liters
<b>ASME Sect IV Water Side Htg Surface</b>	95.8 Sq. Ft. / 8.90 Sq. M.		

\* Add circulator amps.

## BOILER TEMPERATURE RISE / PRESSURE DROP (Based on Full Input)

20°F / 11.1°C				30°F / 16.7°C				40°F / 22.2°C				50°F / 27.8°C				60°F / 33.3°C			
Flow Rate		Pressure Drop		Flow Rate		Pressure Drop		Flow Rate		Pressure Drop		Flow Rate		Pressure Drop		Flow Rate		Pressure Drop	
GPM	L/s	Ft	kPa	GPM	L/s	Ft	kPa	GPM	L/s	Ft	kPa	GPM	L/s	Ft	kPa	GPM	L/s	Ft	kPa
49.0	3.1	4.3	12.9	32.7	2.1	3.2	9.7	24.5	1.5	2.8	8.4	19.6	1.2	2.6	7.7	16.3	1.0	2.4	7.2

Flow GPM				Temp. Rise** (°F)				Vent Length (Equiv. Ft.)				Air Inlet Length (Equiv. Ft.)			
Min		Max		Min		Max		Min		Max		Min		Max	
16.3		49.0		20		100		6		100		0		100	

\*\* Min/Max delta t reflects boiler operation at full input. For applications requiring operation above/below these parameters please consult factory.

<b>REP FIRM</b>	_____
<b>SUBMITTED BY</b>	_____
<b>JOB NAME</b>	_____
<b>ARCHITECT</b>	_____
<b>ENGINEER</b>	_____
<b>CONTRACTOR</b>	_____
<b>DATE</b>	_____

## ENCORE 500 DUAL FUEL

**Category II or Category IV Appliance**  
(see Installation and Operation Manual for venting information)

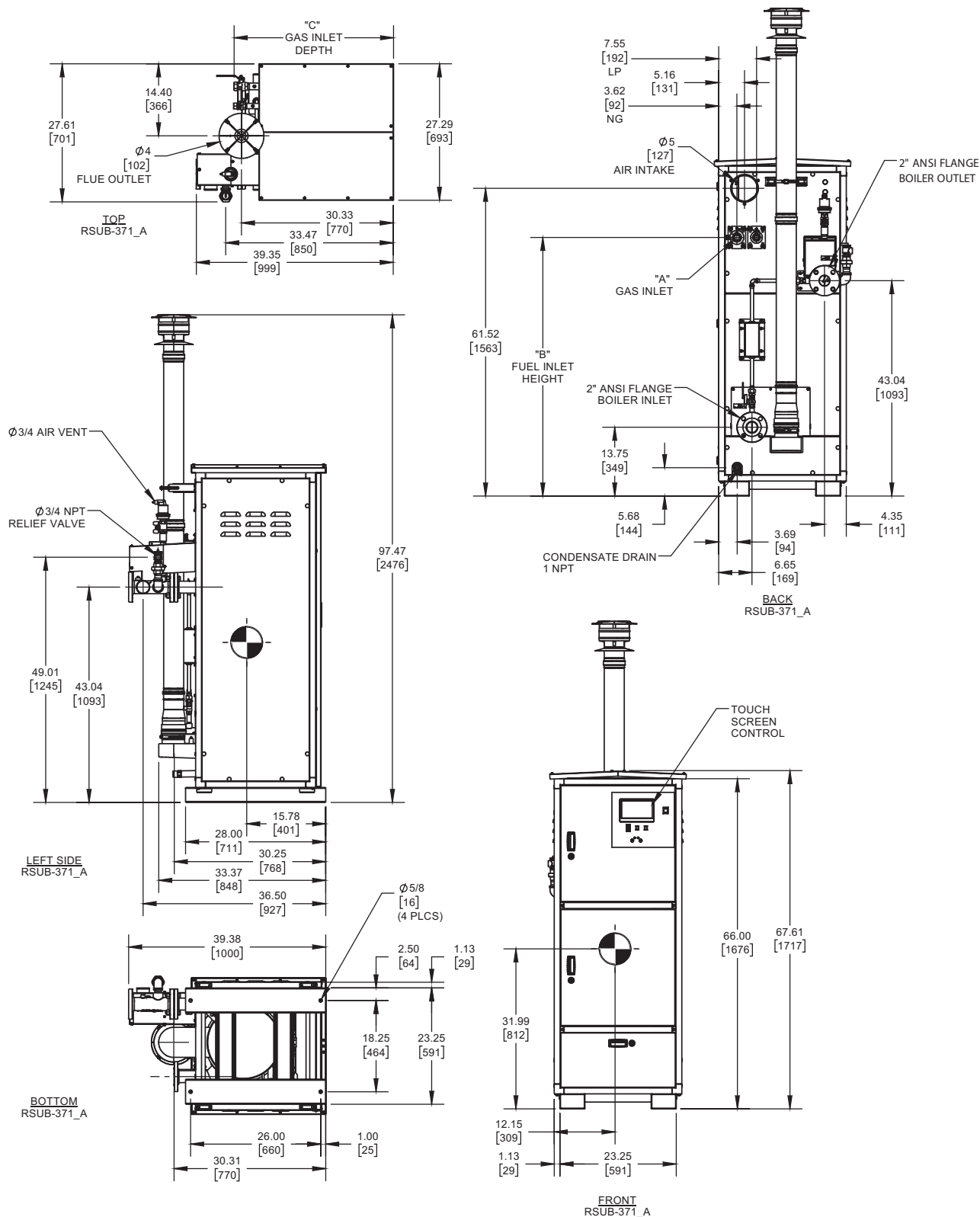


A Division of Mestek, Inc.  
Westfield, MA 01085  
(413) 564-5515

# ENCORE 500 DUAL FUEL


Category II or Category IV Appliance  
(see Installation and Operation Manual for venting information)

## OUTDOOR UNIT



GAS OPTION	"A"	"B"	"C"
NG	1 NPT	51.70	31.82
LP	3/4 NPT	51.70	31.91

### Notes:

1. Dimensions are approximate and should not be used to "rough-in" equipment.
2. Dimensions are subject to change without notice.
3. All dimensions are in inches (mm).
4.  Symbol indicates center of gravity.

## BOILER CERTIFIED RATINGS & CAPACITIES

<b>Fuel Type</b>	Natural/Propane Gas	<b>Boiler FLA</b>	11.2*
<b>Input BTU/hr.</b>	500,000 / 147 KW	<b>Boiler HP</b>	14.6
<b>Output BTU/hr.</b>	490,000 / 144 KW	<b>Min. Gas Pressure Required</b>	4" W.C.
<b>Electrical Requirements</b>	120 VAC/60 Hz/1PH (with neutral)	<b>Max. Gas Pressure Allowed</b>	14" W.C.
		<b>Operating Weight</b>	633 lbs. / 287.1 kg.

## BOILER TRIM & CONTROLS

<b>Main Gas Valve</b>	Dungs MBC	<b>Air Switch</b>	Huba
<b>Ignition Control</b>	Fenwal	<b>Flow Sensor</b>	SIKA
<b>Operating Control</b>	HeatNet®	<b>Blocked Flue Switch</b>	Cleveland NS2
<b>High Limit</b>	Jumo	<b>Blower Motor</b>	Ametek
<b>Relief Valve</b>	3/4" x 3/4" set @ 50 psi	<b>L.W.C.O.</b>	800

## A.S.M.E.

<b>ASME Sect IV Fire Side Htg Surface</b>	72.91 Sq. Ft. / 6.77 Sq. M.	<b>Design Data</b>	Max. 160 psig & 210°F
		<b>Water Volume</b>	12.4 gal. / 46.9 Liters
<b>ASME Sect IV Water Side Htg Surface</b>	95.8 Sq. Ft. / 8.90 Sq. M.		

\* Add circulator amps.

## BOILER TEMPERATURE RISE / PRESSURE DROP (Based on Full Input)

20°F / 11.1°C				30°F / 16.7°C				40°F / 22.2°C				50°F / 27.8°C				60°F / 33.3°C			
Flow Rate		Pressure Drop		Flow Rate		Pressure Drop		Flow Rate		Pressure Drop		Flow Rate		Pressure Drop		Flow Rate		Pressure Drop	
GPM	L/s	Ft	kPa	GPM	L/s	Ft	kPa	GPM	L/s	Ft	kPa	GPM	L/s	Ft	kPa	GPM	L/s	Ft	kPa
49.0	3.1	4.3	12.9	32.7	2.1	3.2	9.7	24.5	1.5	2.8	8.4	19.6	1.2	2.6	7.7	16.3	1.0	2.4	7.2

Flow GPM				Temp. Rise** (°F)				Vent Length (Equiv. Ft.)				Air Inlet Length (Equiv. Ft.)			
Min		Max		Min		Max		Min		Max		Min		Max	
16.3		49.0		20		100		6		100		0		100	

\*\* Min/Max delta t reflects boiler operation at full input. For applications requiring operation above/below these parameters please consult factory.

<b>REP FIRM</b>	_____
<b>SUBMITTED BY</b>	_____
<b>JOB NAME</b>	_____
<b>ARCHITECT</b>	_____
<b>ENGINEER</b>	_____
<b>CONTRACTOR</b>	_____
<b>DATE</b>	_____

## ENCORE 500 DUAL FUEL

**Category II or Category IV Appliance**  
(see Installation and Operation Manual for venting information)



A Division of Mestek, Inc.  
Westfield, MA 01085  
(413) 564-5515